

AGGUSED OF ACTING

actors shine in the spotlight

Natalie Hayner and **Kylea Gardner** play the roles of Abigale Williams and Mercy Lewis. Abigale and Mercy claim to see a yellow bird in the court room because they are "witched". Gardner and Hayner both agreed getting along with the casts members this year was the best part.

John Proctor is soothed by his wife Mary Warren. **Allen Granville** and **Rylie Scott** play the couple.

It was both of the students first time in one act play. Scott said, "Before I went on stage I would go over my lines quick in my head and envision where I'm supposed to go. Then I usually just take a deep breath and head out on stage."



TIME ALLOWED

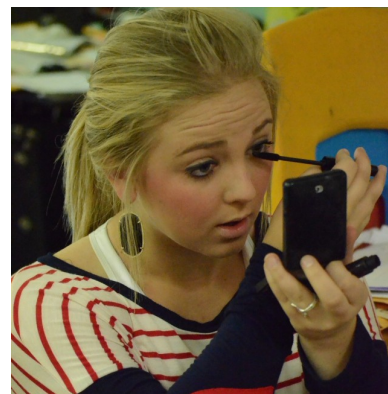
- 7 minutes- setup and strike
- 1 minute- time allowed to start the performance after declaration of end of setup
- 40 minutes- performance time (minimum of 18 mins)
- 10 minutes- amount of music that may be used

DID YOU KNOW?

Crew member, **Colin Read**, works on a set piece just moments before the curtain opens at the community performance of *The Crucible*. Read helped on the crew for 2 years. "I decided to do lights again for a second year because I had a really good time the first year, and I already knew how to do it."



Slave Tituba, played by sophomore **Sydney Key**, pleads to God for forgiveness during one of her monologues. Key said, "Playing Tituba was something I enjoyed. I was able to scream at others and play a strong part, which was different than the other characters. I was also able to really get into character by trying to portray a Barbados accent."



Kylea Gardner gets her stage face ready before she goes on. Gardner said, "Challenging myself to make an impression with such a small role was difficult, but I enjoyed it."

KING & ROBERTSON



INSURANCE AGENCY

9 SO. MAIN STREET-PO BOX 3009
ALBANY, TEXAS 76430
PHONE: 325-762-2288
FAX: 325-762-3214